

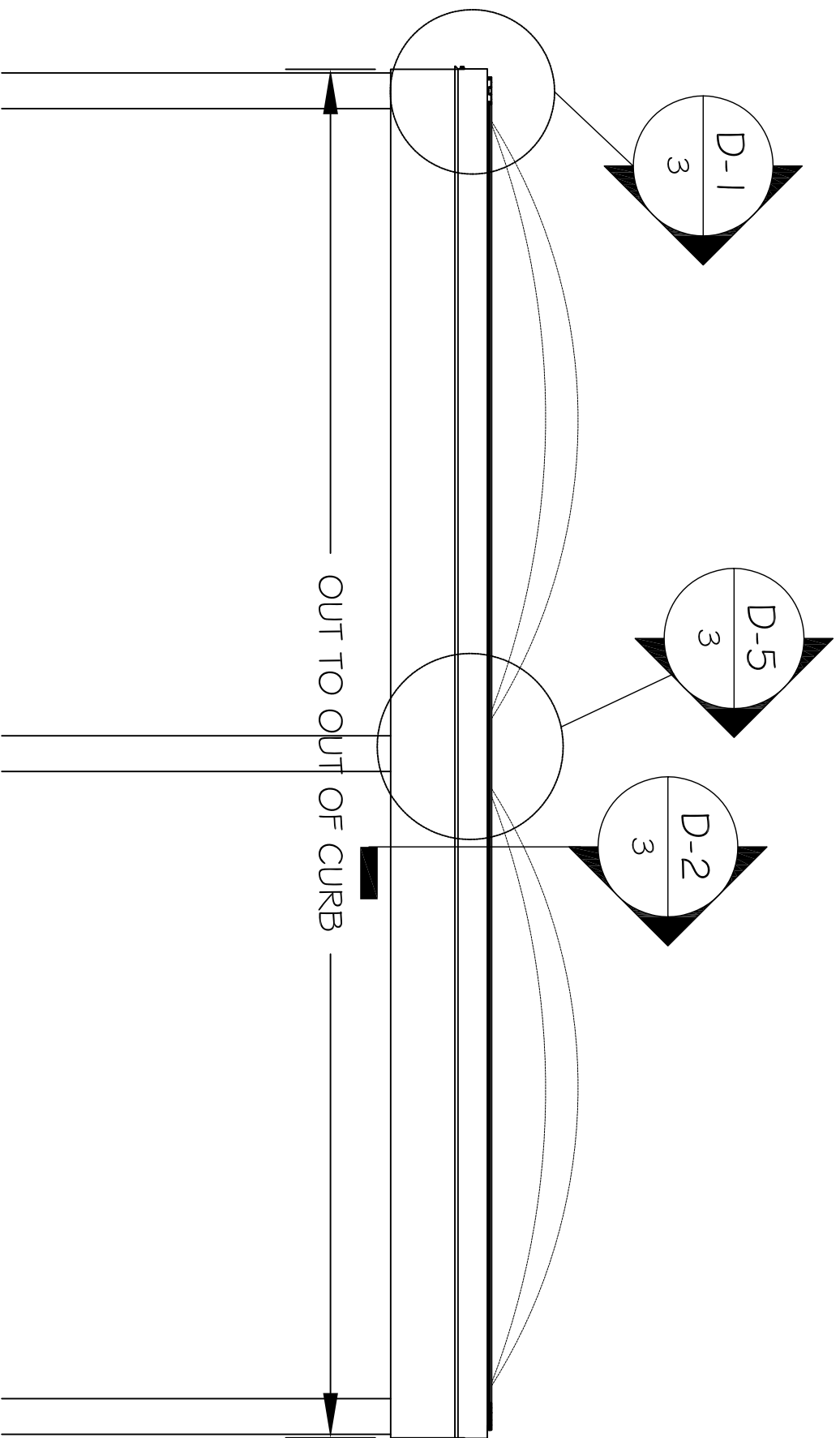
SKYLIGHT PLAN



Energy-Glazed Systems, Inc.

350 Center St. Grayslake, IL 60030(P) 847-223-4500 (F)847-223-6444

Bubble Gutter Grid System



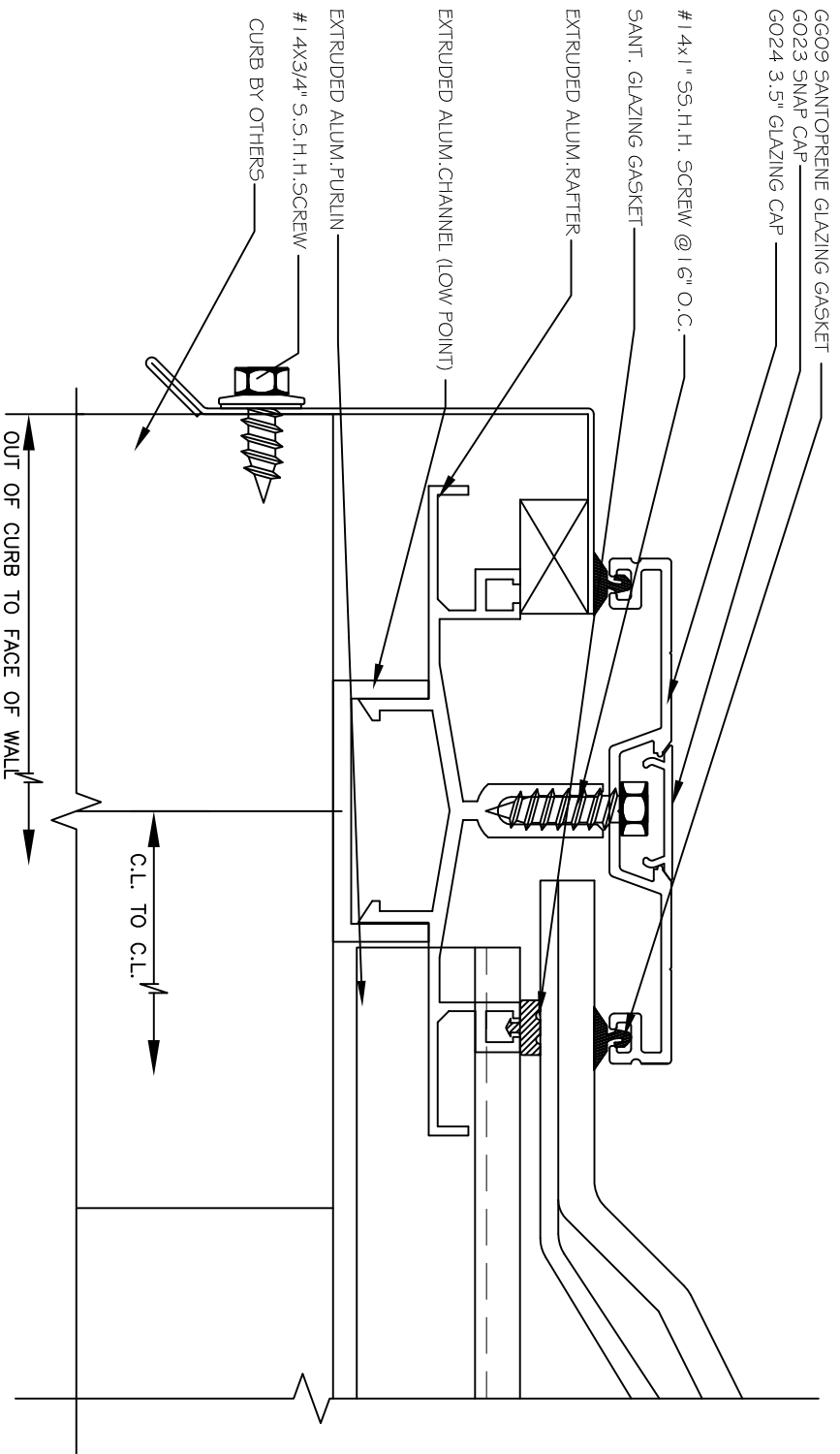
SKYLIGHT ELEVATION



Energy-Glazed Systems, Inc.

350 Center St. Graylake, IL 60030(P) 847-223-4500 (F)847-223-6444

Bubble Gutter Grid System



D-1
3

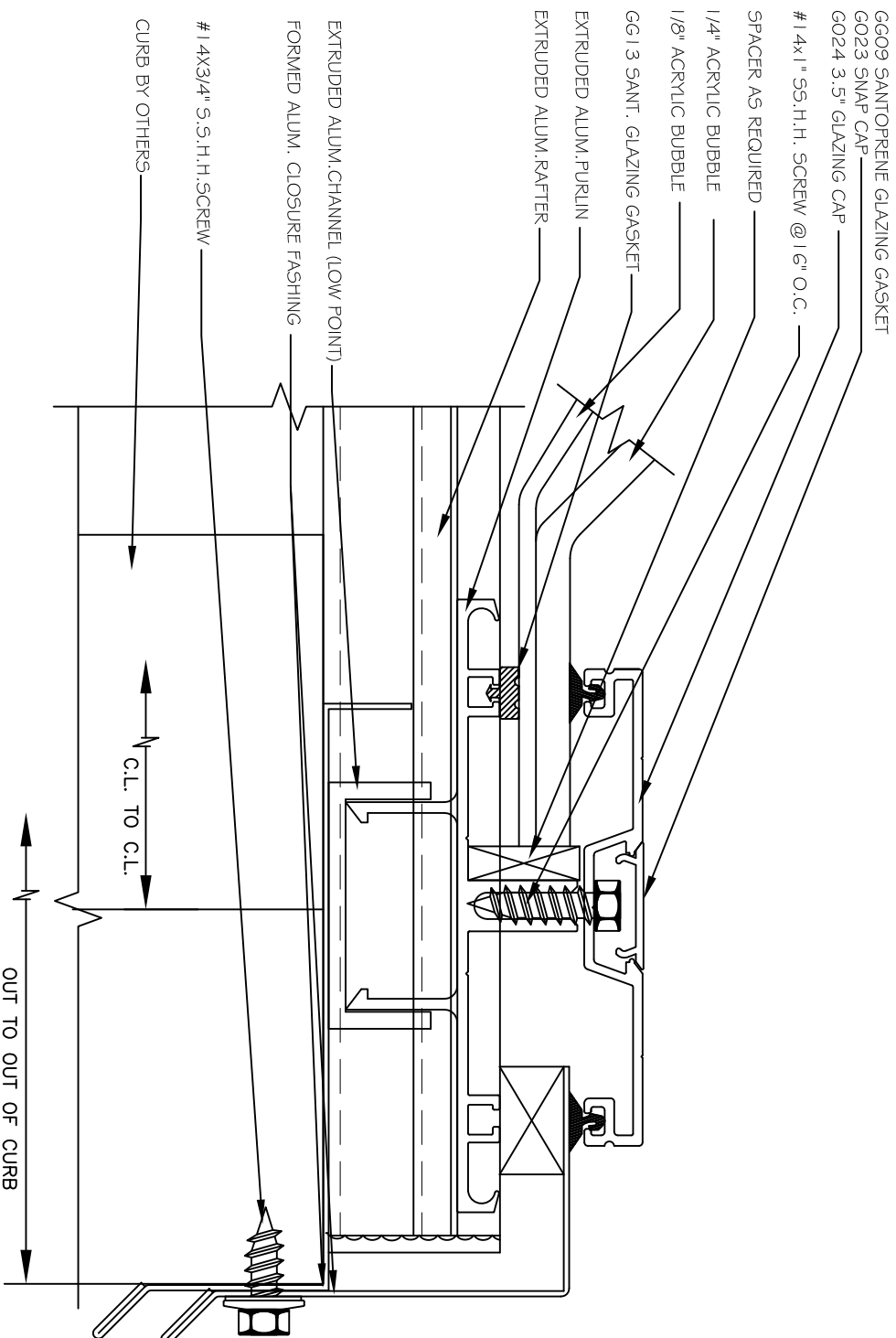
END RAFTER (PURLIN) SECTION



Energy-Glazed Systems, Inc.

350 Center St. Grayville, IL 60030(P) 847-223-4500 (F)847-223-6444

PYRAMID GUTTER GRID SYSTEM



D-2
3

END RAFTER SECTION

PYRAMID GUTTER GRID SYSTEM

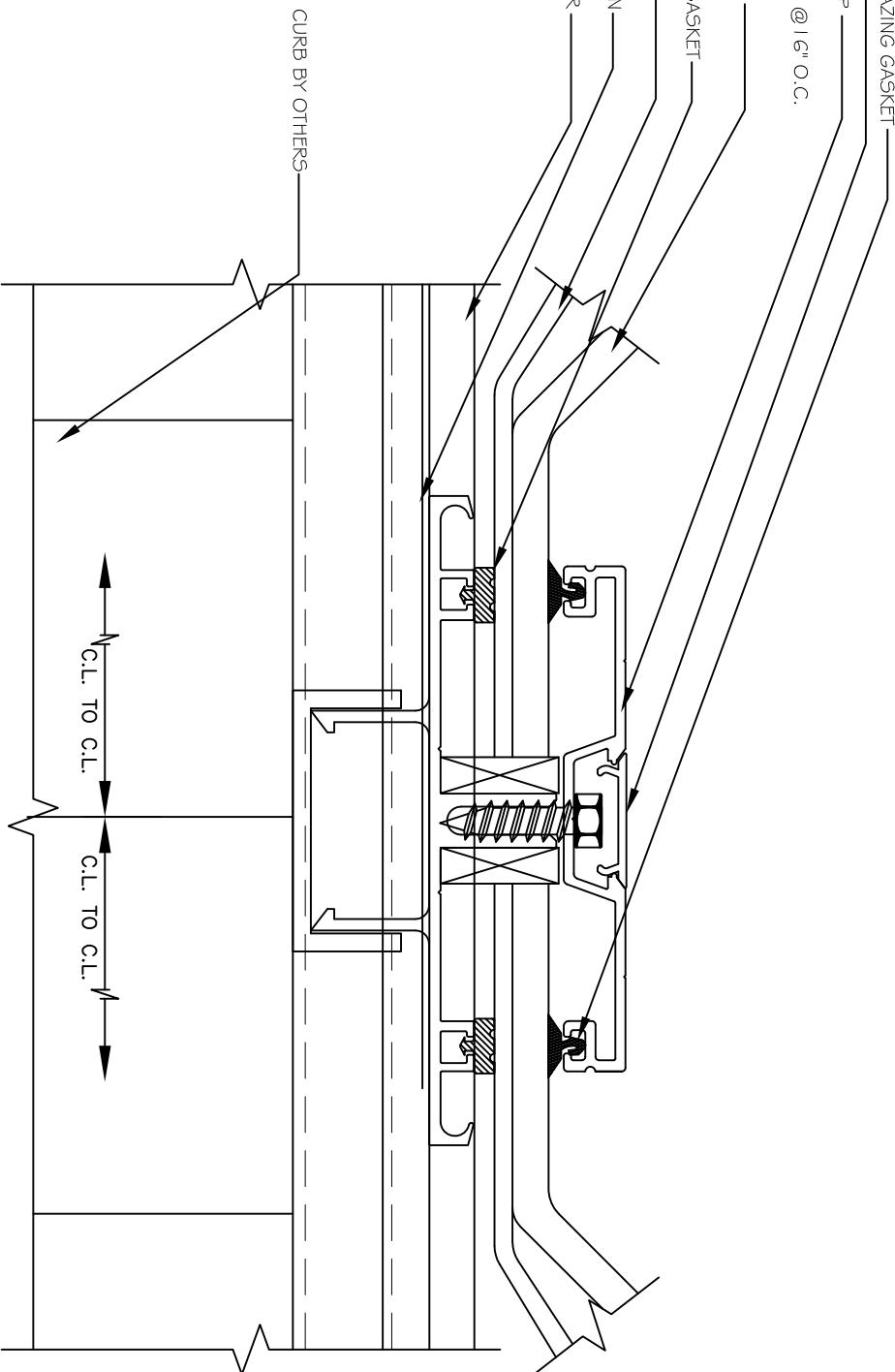


Energy-Glazed Systems, Inc.

350 Center St., Grayville, IL 60030(P) 847-223-4500 (F)847-223-6444

GG09 SANTOPRENE GLAZING GASKET
 G023 SNAP CAP
 G024 3.5" GLAZING CAP
 # 14x1" SS. H.H. SCREW @ 16" O.C.

1/4" ACRYLIC BUBBLE
 GG13 SANT. GLAZING GASKET
 1/8" ACRYLIC BUBBLE
 EXTRUDED ALUM. PURLIN
 EXTRUDED ALUM. RAFFER



CURB BY OTHERS

C.L. TO C.L. C.L. TO C.L.

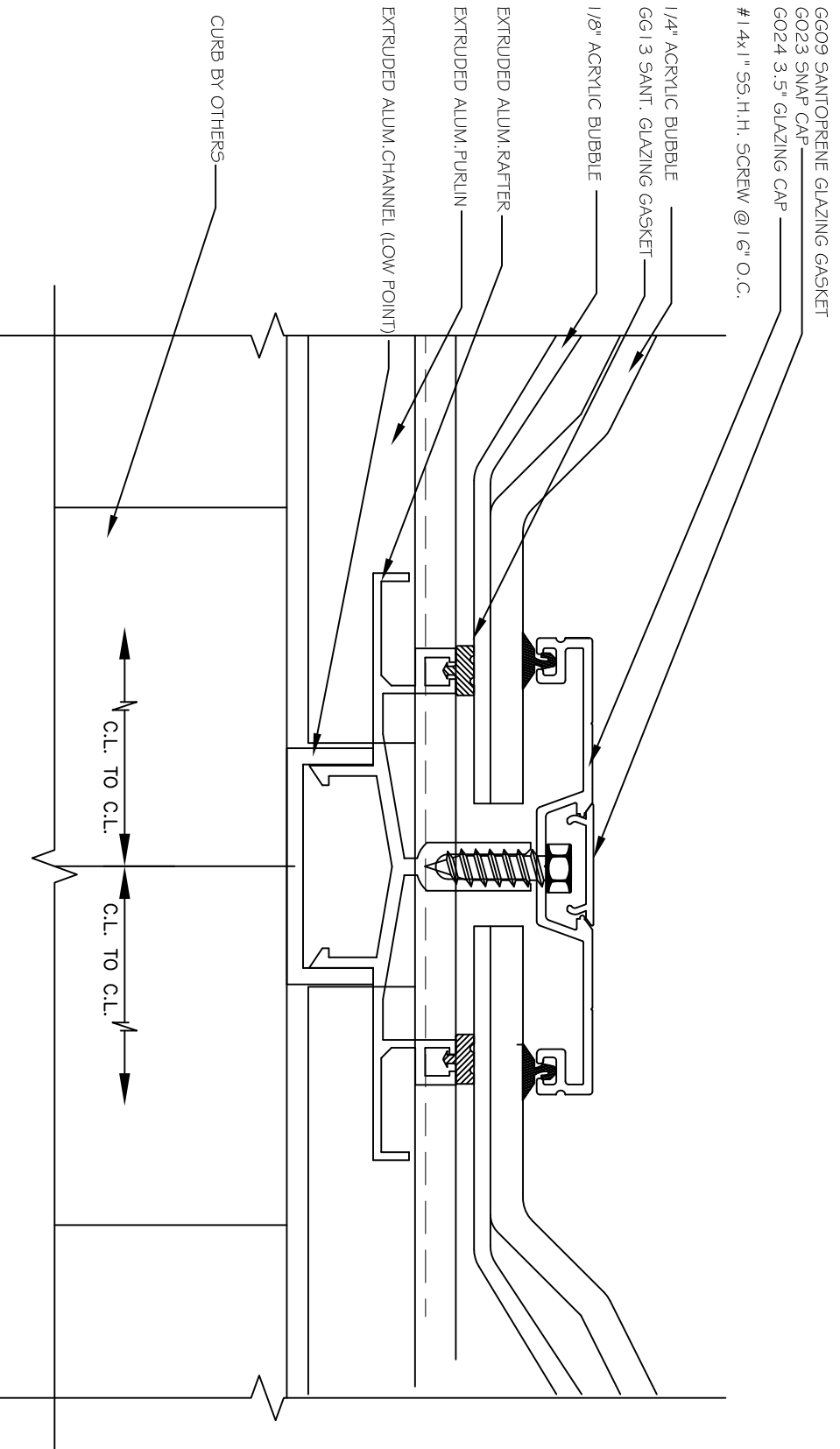
D-3
 3

PURLIN SECTION

PYRAMID GUTTER GRID SYSTEM



Energy-Glazed Systems, Inc.
 350 Center St. Grayville, IL 60030(P) 847-223-4500 (F)847-223-6444



CURB BY OTHERS

EXTRUDED ALUM. CHANNEL (LOW POINT)

EXTRUDED ALUM. PURLIN

EXTRUDED ALUM. RAFTER

1/8" ACRYLIC BUBBLE

GG 1 3 SANT. GLAZING GASKET

1/4" ACRYLIC BUBBLE

1 4x 1" SS. H.H. SCREW @ 1 6" O.C.

G024 3.5" GLAZING CAP
G023 SNAP CAP
G609 SANTOPRENE GLAZING GASKET



D-4
3

RAFTER SECTION

PYRAMID GUTTER GRID SYSTEM



Energy-Glazed Systems, Inc.

350 Center St. Grayville, IL 60030(P) 847-223-4500 (F)847-223-6444